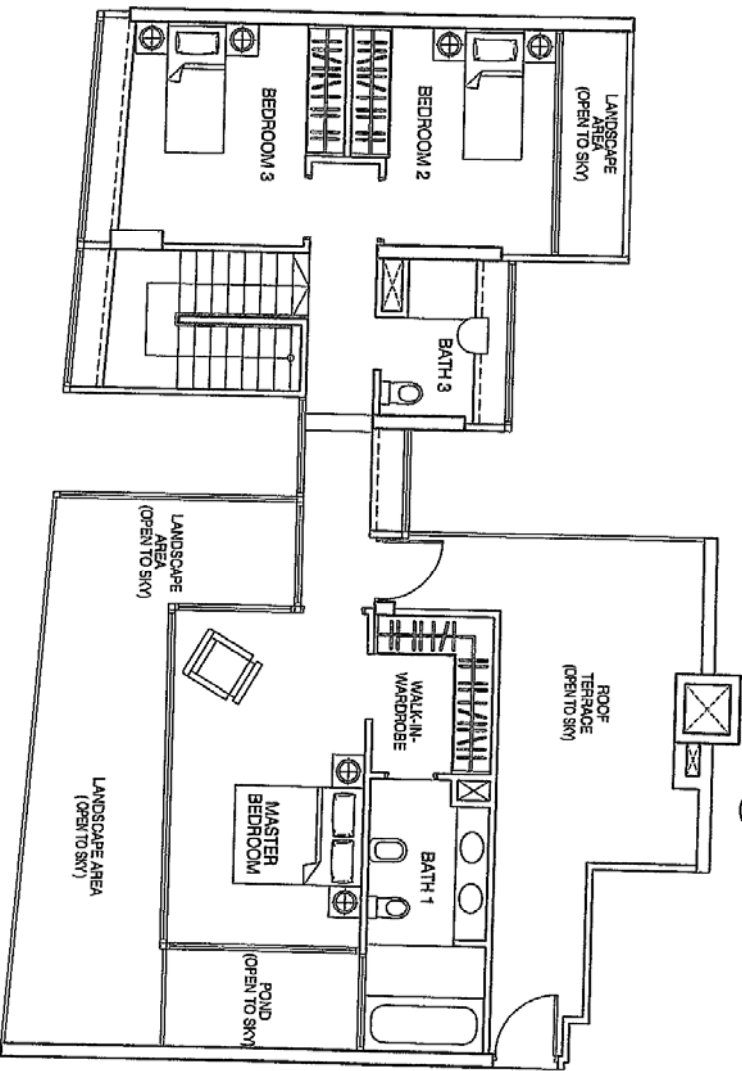
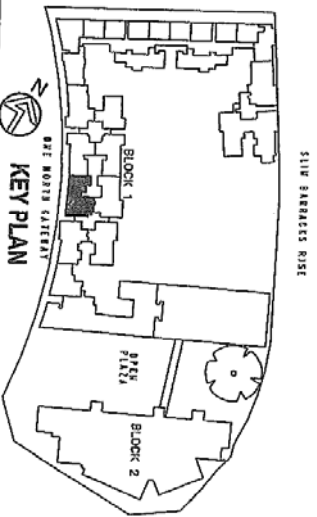


TYPE P5
LOWER FLOOR
4 BEDROOM PENTHOUSE
123.9 SQM / 1333.65 SQ FT



TYPE P5
UPPER FLOOR
4 BEDROOM PENTHOUSE
128.3 SQM / 1381.01 SQ FT
(TOTAL AREA = 252 SQM / 2712.51 SQ FT)

DATE

22 DEC 2006