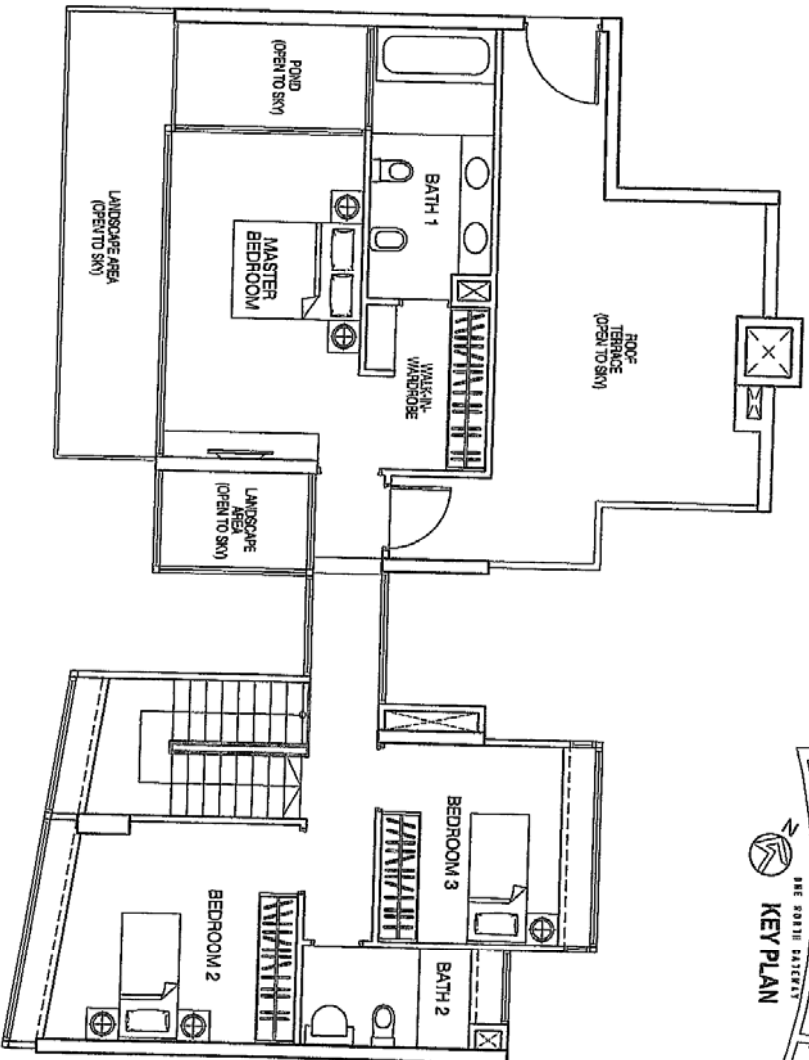
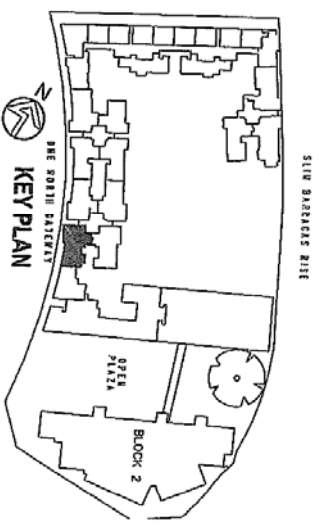


**TYPE P3**  
**LOWER FLOOR**  
**4 BEDROOM PENTHOUSE**  
**124.4 SQM / 1339.03 SQ FT**



**TYPE P3**  
**UPPER FLOOR**  
**4 BEDROOM PENTHOUSE**  
**125.8 SQM / 1354.10 SQ FT**  
**(TOTAL AREA = 250 SQM / 2690.98 SQ FT)**

**DATE OF ISSUE**  
 2 2 DEC 2008  
**P&T CONSULTANTS PTE LTD**