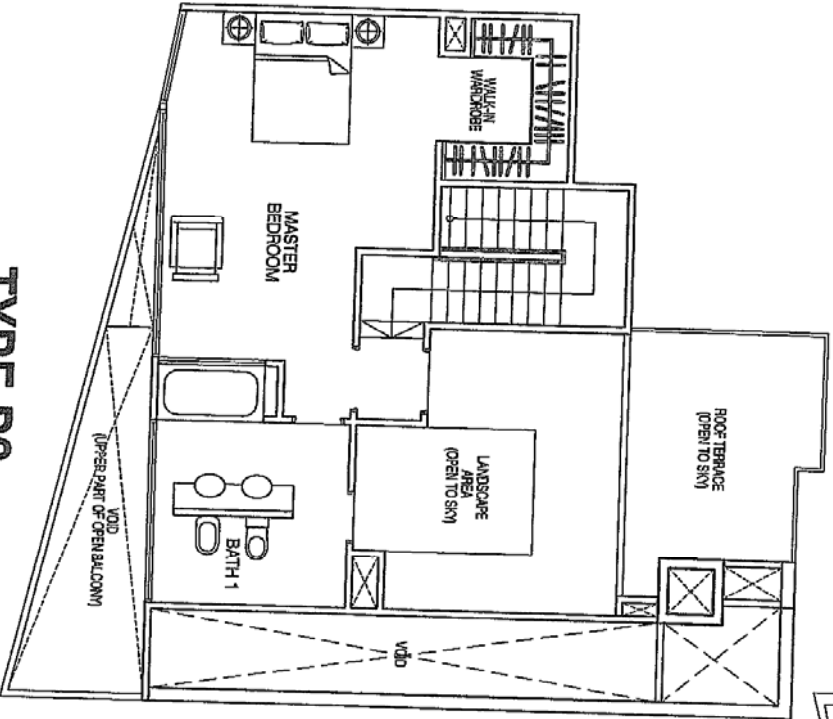
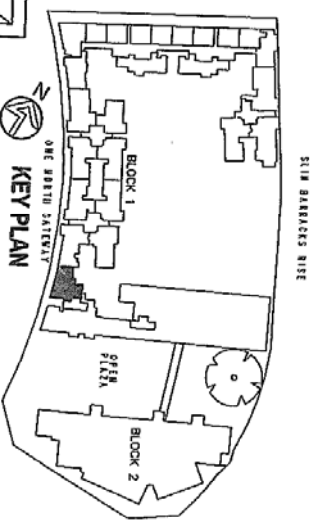


TYPE P2
LOWER FLOOR
4 BEDROOM PENTHOUSE
108.9 SQM / 1172.19 SQ. FT



TYPE P2
UPPER FLOOR
4 BEDROOM PENTHOUSE
74.4 SQM / 800.84 SQ FT
(TOTAL AREA = 183 SQM / 1969.80 SQ FT)

PAGE 13

DATE OF ISSUE
 22 DEC 2006
 P&T CONSULTANTS PTE LTD