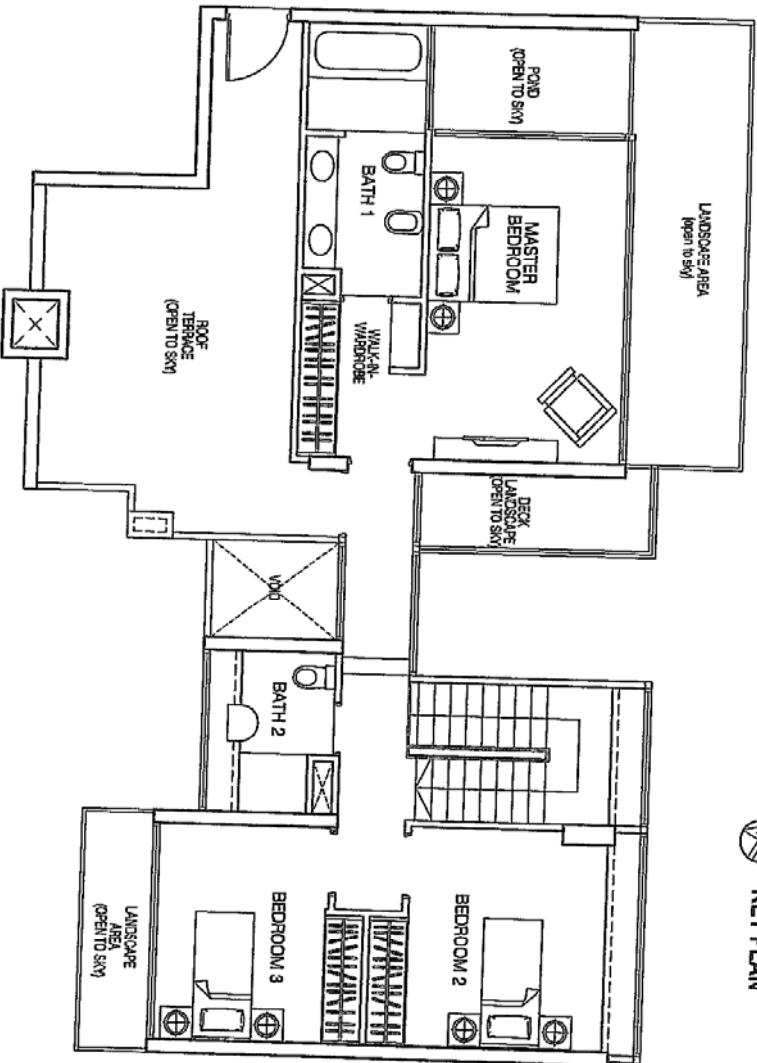
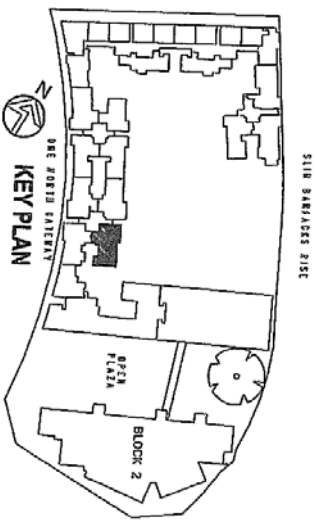


TYPE P1
LOWER FLOOR
4 BEDROOM PENTHOUSE
120.6 SQM / 1298.13 SQ FT



TYPE P1
UPPER FLOOR
4 BEDROOM PENTHOUSE
127.7 SQM / 1374.55 SQ FT
(TOTAL AREA = 248 SQM / 2669.45 SQ FT)